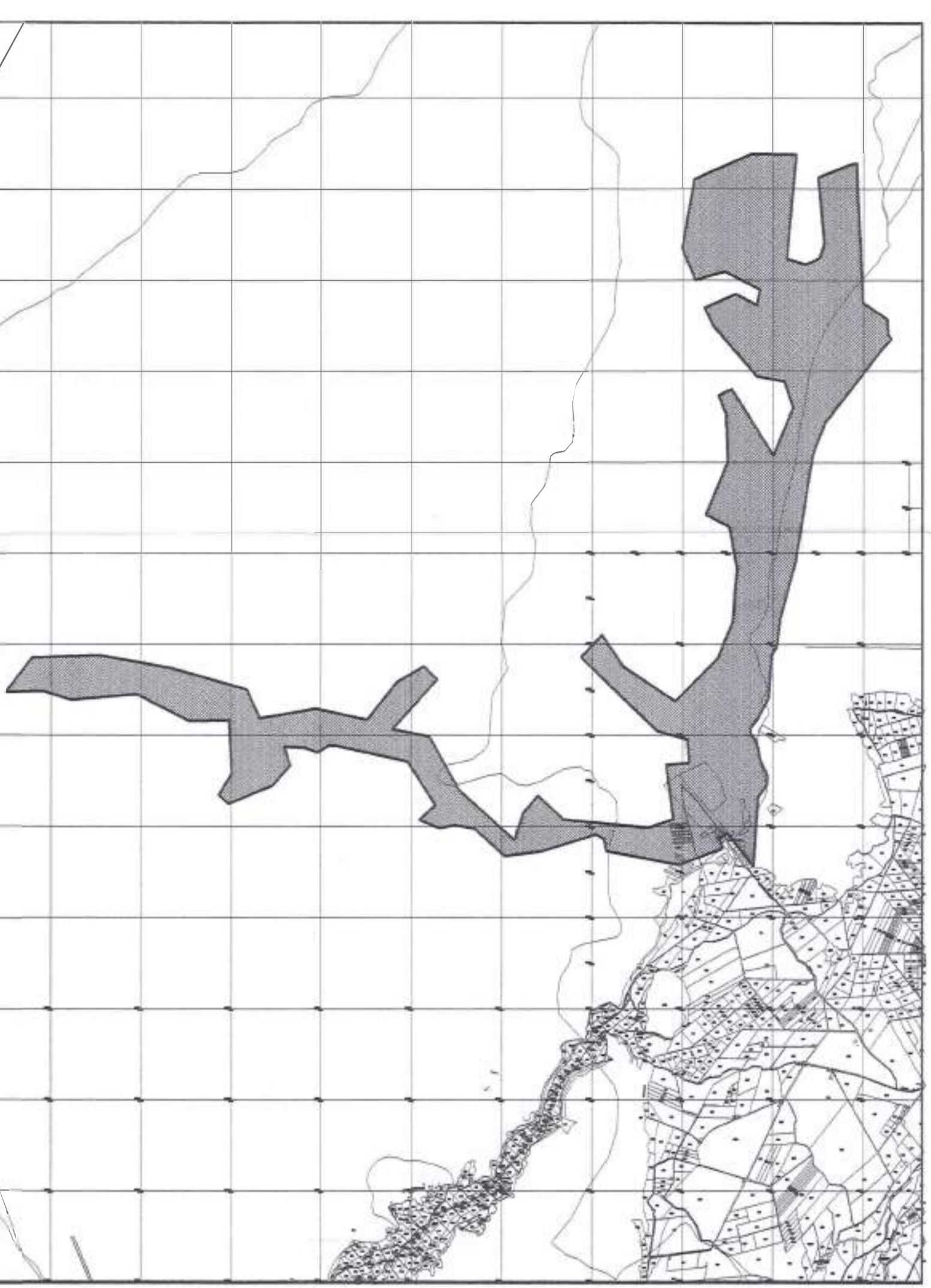
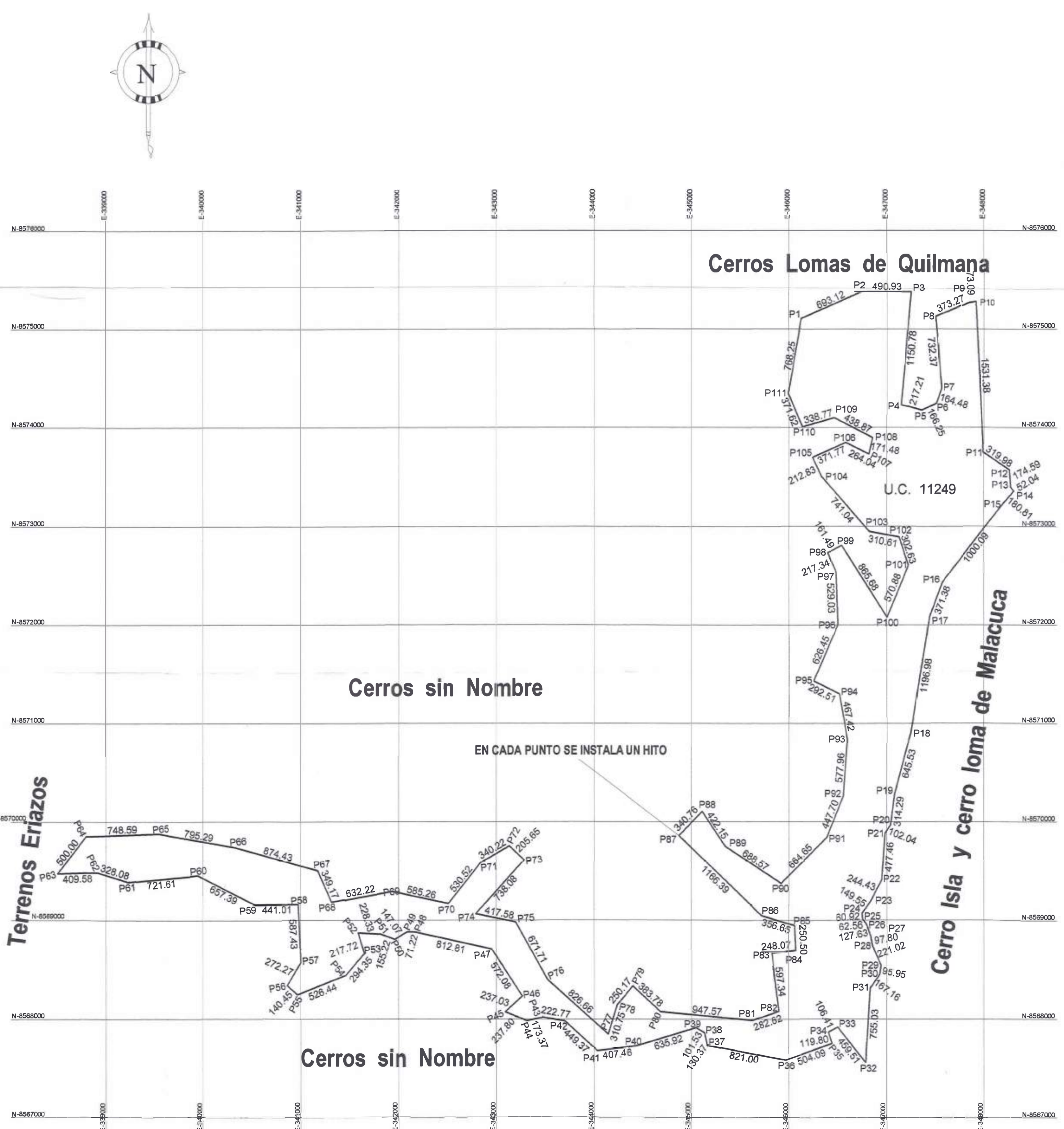


VERTICE	LADO	DIST.	ANGULO	ESTE	NORTE
P1	P1 - P2	693.12	236°24'33.3"	348126.377	8575104.360
P2	P2 - P3	490.93	204°16'48.2"	348761.230	8575382.534
P3	P3 - P4	1160.78	85°35'16.0"	347253.193	8575377.222
P4	P4 - P5	2172.1	269°51'11.1"	347151.187	8574292.876
P5	P5 - P6	168.25	140°52'39.5"	347360.818	8574174.001
P6	P6 - P7	164.48	132°54'36.7"	347512.757	8574241.468
P7	P7 - P8	732.37	204°00.4"	347566.217	8574387.016
P8	P8 - P9	373.27	232°59'33.9"	347691.921	8574124.561
P9	P9 - P10	73.06	193°14'24.6"	347847.837	8575266.934
P10	P10 - P11	1531.38	278°52'8.7"	347920.056	8575278.178
P11	P11 - P12	316.88	234°10'20.1"	347993.761	8575148.570
P12	P12 - P13	174.59	127°10'22.9"	348281.190	8575232.973
P13	P13 - P14	52.04	212°46'49.2"	348274.406	8573399.829
P14	P14 - P15	180.81	102°31'2.1"	348305.642	8573356.201
P15	P15 - P16	1003.09	162°39'16.6"	348187.982	8573220.918
P16	P16 - P17	371.38	163°12'8.4"	347573.039	8572452.233
P17	P17 - P18	1196.88	166°17'10.1"	347440.140	8572085.447
P18	P18 - P19	645.53	174°12'10.1"	347247.641	8572094.045
P19	P19 - P20	314.29	188°23.7"	347030.044	8572086.697
P20	P20 - P21	102.04	153°05'9.9"	347041.609	8569969.732
P21	P21 - P22	477.48	209°51'56.3"	346884.549	8569884.138
P22	P22 - P23	244.43	196°12'59.0"	346950.112	8569407.818
P23	P23 - P24	149.58	188°21'0.7"	346935.685	8569191.841
P24	P24 - P25	60.92	222°52'4.0"	346747.606	8569071.060
P25	P25 - P26	62.56	211°41'3.7"	346784.815	8569010.565
P26	P26 - P27	127.63	197°58'24.3"	346793.740	8568961.593
P27	P27 - P28	67.80	168°52'0.7"	346828.433	8568742.043
P28	P28 - P29	221.02	184°8'33.4"	346854.292	8568745.538
P29	P29 - P30	95.95	148°45'11.8"	346842.332	8568542.814
P30	P30 - P31	167.16	151°51'43.2"	346923.357	8568447.750
P31	P31 - P32	735.03	212°12'7.8"	346933.111	8568321.356
P32	P32 - P33	459.51	42°11'5.2"	346783.693	8567558.830
P33	P33 - P34	106.41	259°52'24.7"	346468.237	8567918.922
P34	P34 - P35	119.80	100°24'4.8"	346404.538	8567868.509
P35	P35 - P36	508.08	81°39'0.6"	346400.010	8567730.730
P36	P36 - P37	821.00	210°32'12.3"	345968.010	8567583.164
P37	P37 - P38	130.37	247°42'13.1"	345161.123	8567734.750
P38	P38 - P39	101.53	133°52'27.5"	345134.783	8567364.450
P39	P39 - P40	639.58	278°21'0.7"	345035.685	8567191.841
P40	P40 - P41	407.48	188°41'7.5"	344439.303	8567230.835
P41	P41 - P42	449.37	229°18'16.2"	344035.011	8567860.067
P42	P42 - P43	223.77	147°40'28.9"	343701.856	8567381.844
P43	P43 - P44	173.37	202°53'3.7"	343485.255	8566919.859
P44	P44 - P45	237.80	21°8'29.0"	343312.896	8567983.803
P45	P45 - P46	237.03	285°26'23.4"	343062.190	8568070.910
P46	P46 - P47	572.08	89°39'43.8"	343268.214	8568231.841
P47	P47 - P48	812.81	135°22'21.9"	342953.358	8568371.064
P48	P48 - P49	71.22	182°16'59.9"	342159.605	8568884.006
P49	P49 - P50	147.07	210°50'24.6"	342088.389	8568884.006
P50	P50 - P51	155.22	200°47'48.7"	341962.110	8568808.809
P51	P51 - P52	228.33	163°14.7"	341816.607	8568561.593
P52	P52 - P53	217.72	289°57'56.9"	341588.158	8568373.438
P53	P53 - P54	284.38	238°15'23.6"	341651.811	8568665.217
P54	P54 - P55	526.44	207°17'13.2"	341457.674	8568443.970
P55	P55 - P56	140.45	242°42'0.6"	340985.252	8568305.056
P56	P56 - P57	272.27	259°39'49.9"	340662.393	8568342.358
P57	P57 - P58	587.43	146°33'34.7"	341001.601	8568758.344
P58	P58 - P59	441.01	268°19'20.1"	340974.039	8569163.125
P59	P59 - P60	657.39	238°42'3.2"	340523.029	8569158.310
P60	P60 - P61	721.61	212°10'20.1"	339947.659	8569454.358
P61	P61 - P62	328.08	202°36'10.1"	339228.925	8569390.040
P62	P62 - P63	409.58	199°25'28.7"	338916.008	8569488.636
P63	P63 - P64	476.70	209°47'4.9"	338556.658	8569474.806
P64	P64 - P65	748.59	230°7'35.6"	338799.228	8569651.168
P65	P65 - P66	795.29	192°32'7.3"	339547.357	8569887.489
P66	P66 - P67	874.43	174°29'49.8"	340030.455	8569739.796
P67	P67 - P68	348.17	128°39'24.8"	341170.899	8569653.136
P68	P68 - P69	632.22	285°46'1.9"	341116.213	8569198.189
P69	P69 - P70	585.26	201°57'36.7"	341938.287	8569260.457
P70	P70 - P71	530.52	243°29'11.4"	342610.318	8569199.809
P71	P71 - P72	340.23	201°40'11.9"	343045.189	8569565.372
P72	P72 - P73	205.65	283°17'51.9"	343135.135	8569754.854
P73	P73 - P74	738.08	268°43'16.9"	343284.531	8569813.573
P74	P74 - P75	417.58	200°47'16.6"	343789.391	8569959.185
P75	P75 - P76	671.71	130°21'19.9"	343789.391	8569959.185
P76	P76 - P77	826.68	180°33'13.4"	343524.878	8569397.977
P77	P77 - P78	310.76	280°43'31.2"	344144.027	8567849.178
P78	P78 - P79	250.17	202°49'45.9"	344268.804	8569148.264
P79	P79 - P80	383.70	221°40'21.9"	344651.671	8569338.265
P80	P80 - P81	947.57	118°59'12.9"	344885.895	8569078.918
P81	P81 - P82	282.62	185°27'36.2"	345629.207	8567899.861
P82	P82 - P83	597.34	257°48'4.7"	345895.015	8569034.899
P83	P83 - P84	248.07	87°38'24.4"	346591.899	8569574.779
P84	P84 - P85	250.50	78°39'24.6"	346701.103	8569897.237
P85	P85 - P86	356.65	108°20'3.7"	346268.809	8568847.474
P86	P86 - P87	1106.39	207°46'5.3"	345717.006	8569049.861
P87	P87 - P88	346.78	270°8'10.6"	344873.375	8569565.239
P88	P88 - P89	472.15	282°6'0.9"	345111.891	8571102.838
P89	P89 - P90	688.57	202°26'29.2"	345347.618	8569752.637
P90	P90 - P91	664.65	239°56'46.7"	345911.053	8569371.456
P91	P91 - P92	447.70	157°18'33.5"	346838.288	8569344.163
P92	P92 - P93	577.98	162°18'26.6"	346555.625	8572259.338
P93	P93 - P94	467.42	185°36'15.2"	346568.991	8570835.881
P94	P94 - P95	292.51	233°7'20.0"	346516.921	8571295.836
P95	P95 - P96	635.45	286°14'13.2"	346253.752	8571421.463
P96	P96 - P97	529.03	154°56'1.9"	346500.549	8572004.207
P97	P97 - P98	217.34	201°54'8.0"	346481.804	8572532.908
P98	P98 - P99	161.49	285°34'18.7"	346386.438	8572738.723
P99	P99 - P100	685.69	268°28.5"	346659.629	8573071.497
P100	P100 - P101	570.88	304°58'43.7"	347000.992	8573078.853
P101	P101 - P102	302.63	221°31'3.4"	347223.180	8572804.203
P102	P102 - P103	310.61	118°41'31.2"	347127.286	8572891.349
P103	P103 - P104	741.04	219°29'6.7"	346851.615	8572446.136
P104	P104 - P105	212.83	196°22'33.4"	346932.689	8573500.991
P105	P105 - P106	371.77	270°36'34.0"	346243.053	8573866.028
P106	P106 - P107	264.04	231°6'39.4"	346581.894	8573840.007
P107	P107 - P108	171.48	283°32'1.2"	346817.448	8573729.804
P108	P108 - P109	436.87	104°14'1.4"	346555.947	8573897.025
P109	P109 - P110	338.77	222°53'21.6"	346465.517	8574057.454
P110	P110 - P111	371.82	262°39'45.5"	346138.405	8574005.894
P111	P111 - P1	788.35	212°59'0.5"	345993.687	8574347.639



**PLANO DE UBICACION**  
Esc.: 1/50,000

PLANO PERIMETRICO	
Propietario:	<b>MANUEL RAMOS YRIGOYEN CECILIA RAMOS RIZOPATRON DANIELA MARIA RAMOS PHILIPS</b>
Ubicación:	Predio: PUERTO FIEL - MALACUCA Distrito: QUILMANA
Provincia:	CAÑETE
Dpto.:	LIMA
Fecha:	JUNIO 2002
Area:	1,179.42 Hás.
Perimetro:	47,750.00 m.l.
Escala:	1/25000
Dibujo:	CAD/ Marve
Responsable:	 Ingeniero Agrónomo R.F. COLEGIO DE INGENIEROS N°12658